



Natural Capital in the South Atlantic

Welcome from SAERI and JNCC

Tara Pelembe
Deputy Director - Innovation

Who we are



- SAERI is an environmental research institute
- established in 2012 by the Falkland Islands Government.
- Recently independent last year
- main base in Stanley, the Falkland Islands.
- firmly rooted in research across all of the South Atlantic Islands
- supported by local stakeholders in the public and private sector.





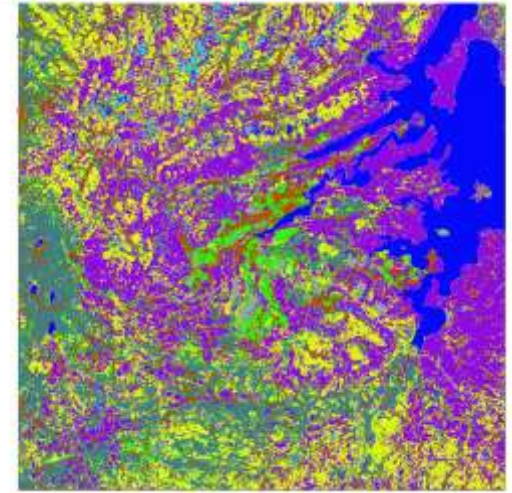
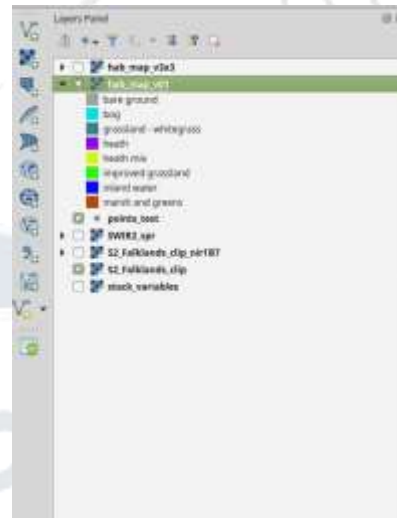
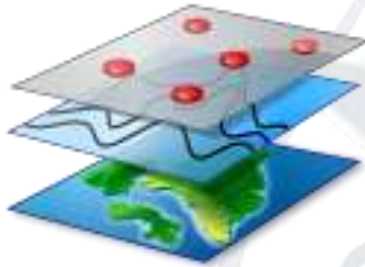
South Atlantic Natural Capital Assessment project

#SouthAtlanticNatCap





a 'philosophy, a framework and processes to make a wide range of socio-economic and scientific data policy relevant'



SOUTH ATLANTIC







Conference logistics

- 3 days
- 08:30 am start – 16:30 -17:00
- Everyone welcome to attend – free.
- Live on Radio – local and international
- Questions at the end of the day – post-its
- We will be keeping to time

Welcome

Enjoy

HOUSEKEEPING TUESDAY 12TH

- Lunch will be provided at Ann's Place today
- Any remaining posters please hand to Tara or Ness, or straight to the museum, as soon as possible.
- Field trips – whale shark trip now fully booked. If you did not manage to get a place and want to go, please let us know ASAP today and we will try to lay on another boat. All other field trips please sign up today. We do not have enough people to run the heritage tour and land-fill/Millennium Forest yet so if you don't sign up today they will be cancelled.
- Speakers, please remember to hand in your presentation to James Hutchison the day before you are due to speak.
- There will be a 5 minute and 2 minute warning as you near the end of your allotted time. Timings are tight, so do please stick to them. We will be stopping you if you run over!

Reception at Plantation House at 6.30pm – 8pm. Coach for all SAERI/JNCC sponsored visitors – please let one of the St Helena Tourism people know asap if you would like to take advantage of this. Please meet at 6pm next to the public library

ST HELENA Conference



St Helena Island
Secret of the South Atlantic

