

Blue Belt programme in the South Atlantic & St Helena

Nature's Benefits: Natural Capital in
the South Atlantic

13 March 2019



What is the Blue Belt Programme?

Provide long term protection of over four million square kilometres of marine environment across the UK Overseas Territories

- Working with the Overseas Territories to identify and develop a number of projects that will:
- Improve scientific understanding of the marine environment
- Develop and implement evidence based, tailored marine management strategies including surveillance and enforcement
- Ensure management is sustainable and long term



The Overseas Territories



- 1** **ANGUILLA**
Capital: The Valley
- 2** **BERMUDA**
Capital: Hamilton
A group of 131 islands and islets, 20 of which are inhabited
- 3** **BRITISH ANTARCTIC TERRITORY**
Large, island and ice shelves that lie south of 60°S between 20°W and 80°W
Principal areas include South Orkney and South Shetland Islands, the Antarctic Peninsula (Palmer Land and Graham Land), the Hebrides and Bouvet de Lopo Soares and Coats Land.
- 4** **BRITISH INDIAN OCEAN TERRITORY (Chagos Archipelago)**
A group of 55 islands. Only the largest, Diego Garcia, has a (nonpermanent) population.
- 5** **BRITISH VIRGIN ISLANDS**
Capital: Road Town
A group of 70 islands, 16 of which are inhabited. Main islands are Tortola, Virgin Gorda, Annetta and Jost Van Dyke.
- 6** **CAYMAN ISLANDS**
Capital: George Town
The islands consist of Grand Cayman, Little Cayman and Cayman Brac.
- 7** **FALKLAND ISLANDS**
Capital: Stanley
The Territory comprises numerous islands situated in the South Atlantic Ocean, the largest being West and East Falkland.
- 8** **GIBRALTAR**
A narrow rocky peninsula, 600 km from the Spanish coast, connected to another Spain by an isthmus.
- 9** **MONTSERRAT**
Capital: Plymouth (disused due to volcanic activity).
- 10** **PITCAIRN ISLANDS**
Capital: Adamstown
Includes the uninhabited islands of Henderson, Ducie and Oeno. Henderson Island is a World Heritage Site.
- 11** **ST HELENA, ASCENSION AND TRISTAN DA CUNHA**
Capital: St Helena, Jamestown
Capital: Ascension: Georgetown
Capital: Tristan da Cunha: Edinburgh of the Seven Seas
Gough Island, part of the Tristan da Cunha Group, is a World Heritage Site.
- 12** **SOUTH GEORGIA & THE SOUTH SANDWICH ISLANDS**
Administrative Centre: King Edward Point.
- 13** **SOVEREIGN BASE AREAS OF AKROTIRI AND DHEKELIA**
These are the areas of Cyprus which remained under British sovereignty when the 1963 Treaty of Establishment created an independent Republic of Cyprus. There are two bases: the Western Sovereign Base Area which consists of Episkopi and Akrotiri stations, and the Eastern Sovereign Base Area which consists of Dhakia station and Ayia Nafissa.
- 14** **TURKS AND CAICOS ISLANDS**
Capital: Cockburn Town
A group of over 40 islands only 8 of which are inhabited. The largest islands are Grand Turk, Providenciales, South Caicos, Middle Caicos, East Caicos, North Caicos and Salt Cay.



A Partnership Approach

- OTs lead delivery
- Supported by MMO and Cefas:
- Cefas - marine science advice
- MMO – advice on integrated marine management and compliance and enforcement
- Partnership working with NGOs, academia and others



Five UK OTs, seven regions :

- Each OT with differing ecosystems and bespoke requirements
 - Initial baseline review
 - Needs and gaps analysis
 - Consultation with OT
 - Development of work-plans
- Reassurance - enhancing, NOT taking over, current programmes and advice



Five UK OTs, seven regions :

Science and Evidence

- Fisheries assessments
- Acoustic surveys
- Tagging programmes
- Deep sea camera surveys
- Long-term monitoring



Management of Human Activities

- Developing legislation
- Supporting policy development
- Marine Management Plans
- Licensing
- Data management



Compliance and Enforcement

- Gathering intelligence
- Training
- Supporting investigations
- Trialling technology



Science & Evidence



St Helena

- Tuna tagging, stomach content analysis
- Grouper tagging, age-determination and reproductive ecology



Tristan da Cunha

- James Clark Ross survey of seamount ecology
- Stock assessment of the bluenose fishery
- Advice on lobster fishery



Ascension

- Investigation of seamount habitats (acoustic data and underwater video)



Science & Evidence



South Georgia & South Sandwich Islands

- Trialling deep-water camera system to collect information on the benthic biodiversity.



British Indian Ocean Territory (BIOT)

- Water quality monitoring around Diego Garcia



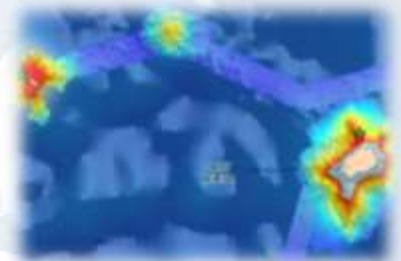
Pitcairn Islands

- Mapping of the benthic communities around Pitcairn Island using high definition videos and photos
- Sampling of microplastics on Henderson Island



Science & Evidence

- Discovery Expeditions 99 & 100 (February to April)
- Discovery Expedition 99: assess the state of the benthic environment and investigate the potential impact of the licensed longline fishery on the benthic biodiversity of South Georgia and the South Sandwich Islands
- Discovery Expedition 100: visit Tristan Da Cunha and St Helena
 - Tristan da Cunha: understanding the biodiversity and habitats associated with the seamounts
 - St Helena: investigating the pelagic ecosystems to improve understanding of the food webs that underpin tuna fisheries



Management of Human Activities



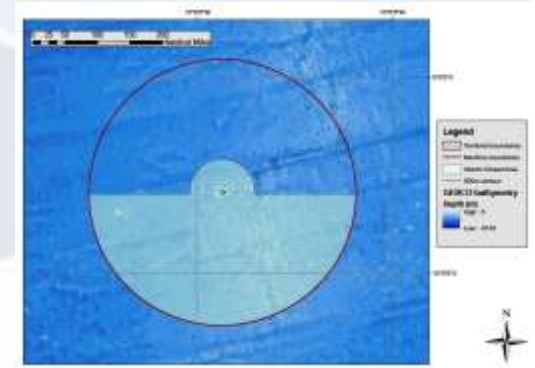
St Helena

- Revised Fisheries Ordinance
- Advice on management of marine ecotourism, sand extraction and waste water discharge



Tristan da Cunha

- Advice on appropriate marine protection strategy
- Review of options for shipping vessel traffic management
- Advice on legal framework



Ascension

- Advice on MPA designation process and assistance in preparing supporting evidence
- Assessing costs of management strategies
- Economic assessment of fishery
- Review of existing legislation



Management of Human Activities



South Georgia & South Sandwich Islands

- Review of aspects of licensing criteria / penalties



British Indian Ocean Territory (BIOT)

- Support to BIOT Administration to develop a Conservation Management Plan for the Territory



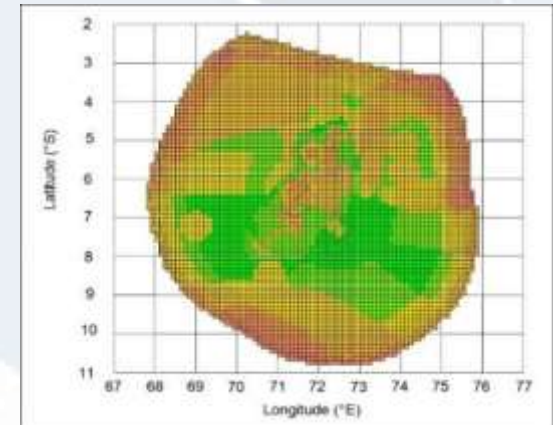
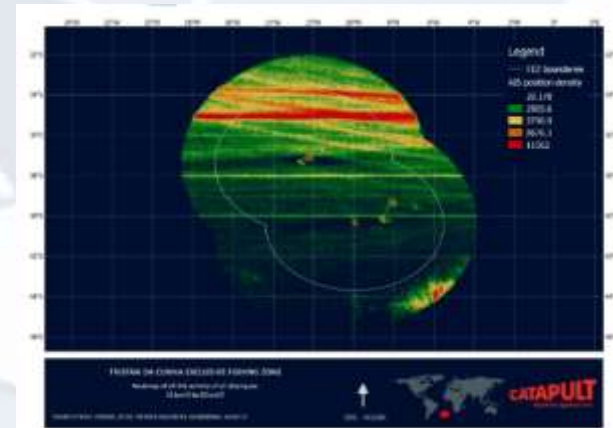
Pitcairn Islands

- Development of MPA Management Plan
- Development of a code of conduct for whale watching



Compliance & Enforcement

- Establish an Intelligence Hub
- Task patrol vessels, satellite surveillance and new technology based on a risk/intelligence basis
- Support OTs with IUU fishing investigations
- Deliver OT-specific enforcement training packages
- Flag state liaison & RFMO representation
- New technology roadmaps



For Programme updates, you can follow us on
Twitter: [@ukgovbluebelt](https://twitter.com/ukgovbluebelt)

Thank you to our funders



Funded by
UK Government



Blue Belt



Marine
Management
Organisation



Centre for Environment
Fisheries & Aquaculture
Science



Funded by
UK Government